

Over 20 years of
worldwide experience
in solar water heating

BURAL
SOLAR





BURAL is a dynamic manufacturer with over 20 years of experience in manufacturing complete range of solar water heating system equipments. Our success is based on offering high performance and durable products which are results of long term customer relations mentality and continuous improvements.

Our goal is to assure customer satisfaction by offering high quality, reliable products and we consider them basic philosophy of excellence.

We have extensive experience in supporting our customers to offer the best solution for their needs. And, as a solar specialist, we share our experience to develop successful projects.

Our production facilities have international manufacturing standarts, equipped with latest technology and experienced staff.



INDEX

SOLAR COLLECTORS

THERMOSIPHON SOLAR WATER HEATERS

FORCED SOLAR WATER HEATERS

VACUUM TUBE SOLAR WATER HEATERS

DOMESTIC HOT WATER TANKS

ACCESSORIES

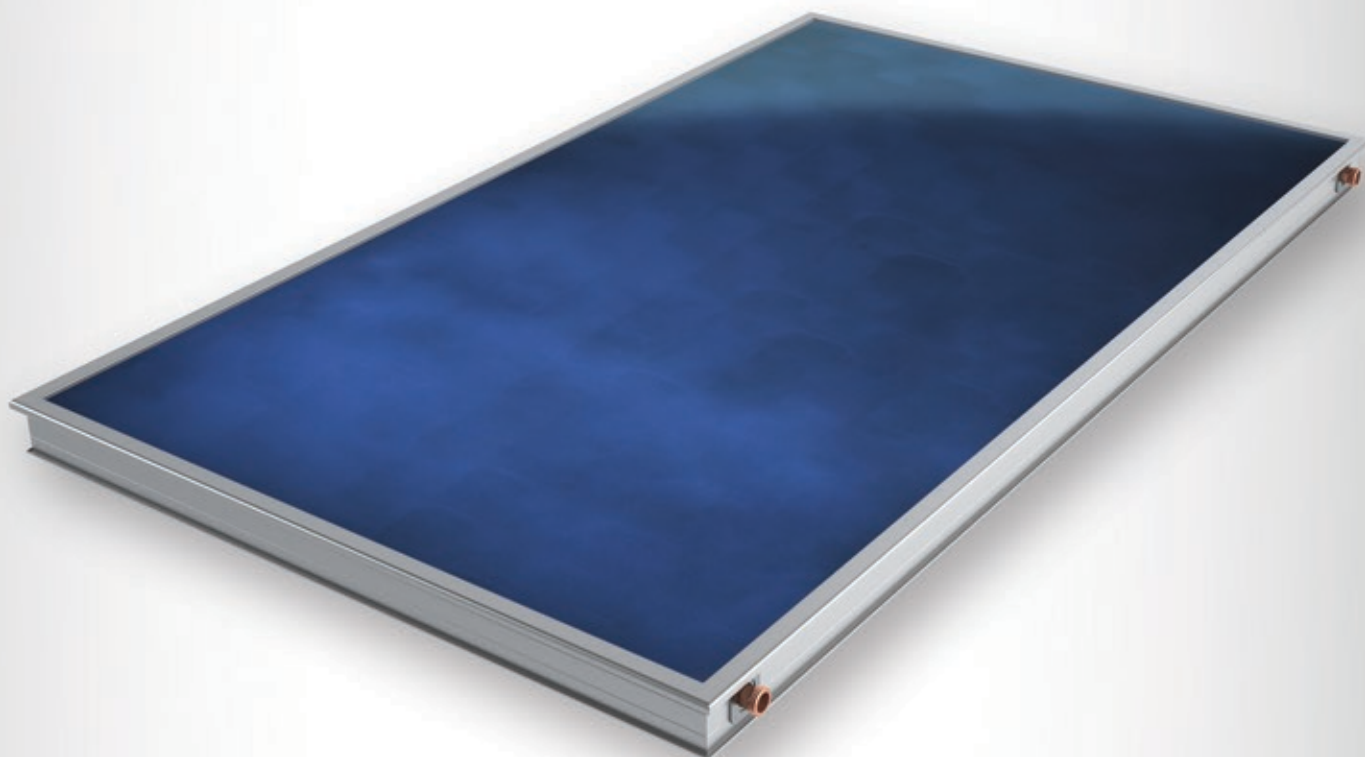
COMMERCIAL SYSTEMS

SOLAR COLLECTORS

BURAL solar collectors provides the best cost/performance ratio. Enduring construction made of aluminium profile and tight thermal insulation makes it the perfect solution for all climates. BURAL solar collectors are available in two types as HP series and ST series.

► HP Series Solar Collectors

Full plate absorber, laser welded with high selective blue coating. Ultra tight frame and rock wool insulation or optional direct-injected PU insulation. HP series are the perfect solution for areas have low solar radiation. With it's modular mounting set, the collector can be mounted on flat roofs and pitched roofs. Solar Keymark certified according to EN12975 and EN ISO 9806:2013



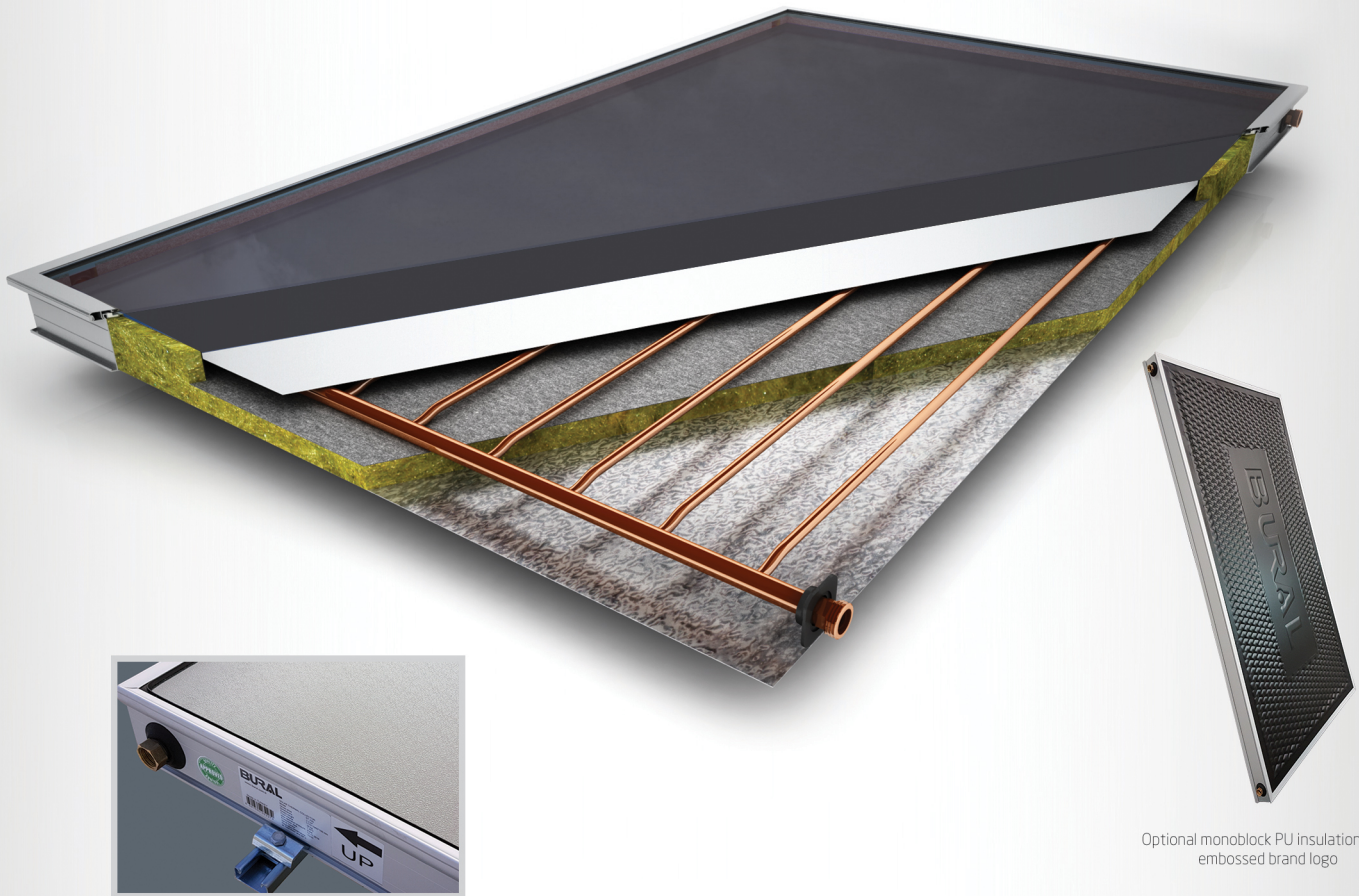
	HP 180	HP 210	HP 230	HP 270
Gross Area (m ²)	1,76	2,07	2,31	2,66
Dimensions (mm)	916x1916x92	1176x1761x92	1176x1961x92	1176x2261x92
Weight (kg)	26	33	36	40
Transparent Cover	Tempered Solar Glass	Tempered Solar Glass	Tempered Solar Glass	Tempered Solar Glass
Absorber sheet	High selective, Al	High selective, Al	High selective, Al	High selective, Al
Absorption α_{sol} / Emission $\epsilon_{100^{\circ}C}$	95% / 5%	95% / 5%	95% / 5%	95% / 5%
Welding Type	Laser	Laser	Laser	Laser
Copper Riser Tubes	7/8	9/10	9/10	9/10
Insulation	Rock wool	Rock wool	Rock wool	Rock wool
Back Sheet	Aluminium	Aluminium	Aluminium	Aluminium
Mounting Options	Flat roof, pitched roof, in-roof	Flat roof, pitched roof, in-roof	Flat roof, pitched roof, in-roof	Flat roof, pitched roof, in-roof

* Sizes and specifications are subject to change without prior notice.



► ST Series Solar Collectors

Cost effective solar collector with performance and long durability. Same construction and material as HP series, the unique difference is the full plate laser welded absorber in black colour. Solar Keymark certified according to EN12975 and EN ISO 9806:2013



Optional monoblock PU insulation with embossed brand logo

	ST 180	ST 210	ST 230	ST 270
Gross Area (m ²)	1,76	2,07	2,31	2,66
Dimensions (mm)	916x1916x92	1176x1761x92	1176x1961x92	1176x2261x92
Weight (kg)	26	33	36	40
Transparent Cover	Tempered Solar Glass	Tempered Solar Glass	Tempered Solar Glass	Tempered Solar Glass
Absorber sheet	Black selective, Al	Black selective, Al	Black selective, Al	Black selective, Al
Absorption α_{sol}	93% (+,-1%)	93% (+,-1%)	93% (+,-1%)	93% (+,-1%)
Welding Type	Laser	Laser	Laser	Laser
Copper Riser Tubes	7/8	9/10	9/10	9/10
Insulation	Rock wool	Rock wool	Rock wool	Rock wool
Back Sheet	Aluminium	Aluminium	Aluminium	Aluminium
Mounting Options	Flat roof, pitched roof, in-roof	Flat roof, pitched roof, in-roof	Flat roof, pitched roof, in-roof	Flat roof, pitched roof, in-roof

* Sizes and specifications are subject to change without prior notice



THERMOSIPHON SOLAR WATER HEATERS

Having a **BURAL Thermosiphon Solar Water Heater** means benefit from over 20 years of experience, as thousands of products are in operation worldwide. Aesthetic appearance, high efficiency and long durability are main advantages of **BURAL** solar water heaters.

- ▶ Hygienic vitreous enamelled steel tank with food grade quality.
- ▶ Long lifespan with magnesium anode protection.
- ▶ No need to expansion tank.
- ▶ Easy installation for pitched roofs and flat roofs.
- ▶ Availability of Closed Loop and Open Loop systems.
- ▶ Solar Keymark certified according to EN12976



▶ KD Series Closed Loop System

Indirect system with a heat exchanger surrounds the hot water tank, heating fluid moves between solar collector and heat exchanger

	KD 160	KD 200	KD 300
Tank Dimensions (mm)	Ø600x1057	Ø600x1257	Ø600x1857
Tank Dry Weight (kg)	67	78	118
Tank Insulation	PU	PU	PU
Solar Collector Area (m²) (*)	2,31	2,31	4,62
Solar Collector Weight (kg)	36	36	72
Solar Collector Insulation	Rock wool	Rock wool	Rock wool
Mounting Set	Flat roof, pitched roof, low profile	Flat roof, pitched roof, low profile	Flat roof, pitched roof, low profile

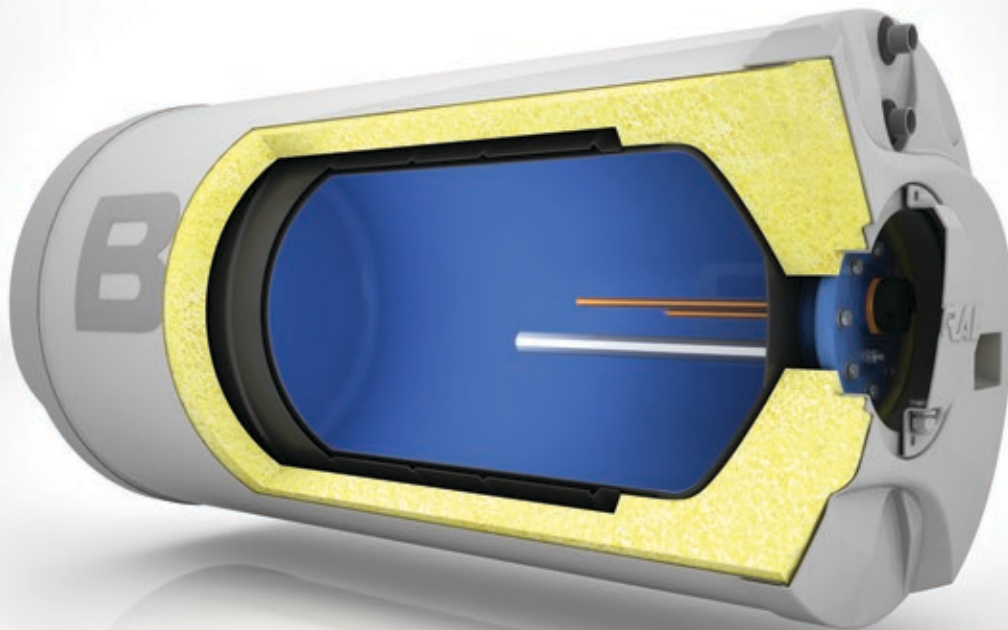
* Sizes and specifications are subject to change without prior notice



► AD Series Open Loop System

Direct system designed for places where the water quality is good and no freezing risk. No need a heating fluid, cold water moves from the tank to solar collector, hot water moves from solar collector to the tank.

	AD 160	AD 200	AD 300
Tank Dimensions (mm)	Ø600x1057	Ø600x1257	Ø600x1857
Tank Dry Weight (kg)	57	66	89
Tank Insulation	PU	PU	PU
Solar Collector Area (m²) (*)	2,31	2,31	4,62
Solar Collector Weight (kg)	36	36	72
Solar Collector Insulation	Rock wool	Rock wool	Rock wool
Mounting Set	Flat roof, pitched roof, low profile	Flat roof, pitched roof, low profile	Flat roof, pitched roof, low profile



* Solar collector area and absorber type varies due to climate and radiation conditions of the site.

* Sizes and specifications are subject to change without prior notice

FORCED SOLAR WATER HEATERS

Maximum performance, controlled and comfortable solar water heating.

System components consist of followings:

- ▶ Vertical hot water tank with one or two coils.
- ▶ Solar collectors according to size of the system.
- ▶ Accessories containing hydraulic and electronic parts.
- ▶ Mounting set for flat or pitched roof mounting of solar collectors.



	PS 200	PS 300	PS 500	PS 800	PS 1000	PS 2000
Tank Volume (lt)	200	300	500	800	1000	2000
Solar Collector (*)	2xHP230	3xHP230	4xHP230	6xHP230	8xHP230	16xHP230
Mounting Set	1xDD2 OR 1xKC2	1xDD3 OR 1xKC3	2xDD2 OR 2xKC2	2xDD3 OR 2xKC3	4xDD2 OR 4xKC2	8xDD2 OR 8xKC2
Solar Controller	2/3 sensors, 1/2 relay(s)	2/3 sensors, 1/2 relay(s)	2/3 sensors, 1/2 relay(s)	2/3 sensors, 1/2 relay(s)	2/3 sensors, 1/2 relay(s)	2/3 sensors, 1/2 relay(s)
Solar Station	single/double line	single/double line	single/double line	single/double line	single/double line	single/double line

* Solar collector area and absorber type varies due to climate and radiation conditions of the site.



VACUUM TUBE SOLAR WATER HEATERS

Non-pressurized Solar Water Heater with stainless steel (SUS-304) tank. Cold water is heated in vacuum tubes and flows up to the storage tank by thermosiphonic cycle.

- ▶ SUS-304 stainless steel tank with food grade.
- ▶ Insulation: High-density polyurethane foam.
- ▶ External cover of tank: Painted steel / stainless steel
- ▶ Mounting set: Coated steel flat roof type



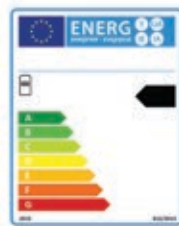
	BV 18	BV 24	BV 30
Main tank capacity (lt)	100	130	160
Feeding tank capacity (lt)	50	50/130	50/130/160
Main tank material	SUS 304 stainless steel	SUS 304 stainless steel	SUS 304 stainless steel
Feeding tank material	SUS 304 stainless steel	SUS 304 stainless steel	SUS 304 stainless steel
External cover	Painted or stainless steel	Painted or stainless steel	Painted or stainless steel
Tube number	18	24	30
Tube specifications	Ø47*1800 mm, three-elements copper alloy	Ø47*1800 mm, three-elements copper alloy	Ø47*1800 mm, three-elements copper alloy

* Sizes and specifications are subject to change without prior notice

DOMESTIC HOT WATER TANKS

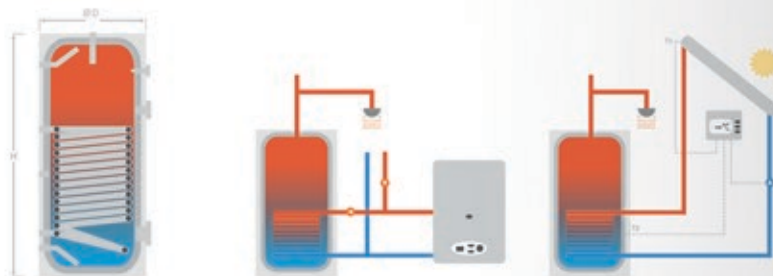


- ▶ Enamelled (glass-lined) hot water tank produced in accordance with DIN4753-3.
- ▶ Cathodic protection by magnesium anode bar
- ▶ Wide range from 100 lt to 3000 lt.
- ▶ Hard PU insulation and coated steel external cover from 100 lt to 500 lt, soft PU insulation and vinylex external cover from 800 to 3000 lt.
- ▶ Optional plug & play electrical heater with built-in security and regulation function thermostat.



▶ BS Series Single Coil Domestic Hot Water Tanks

Provides hot water efficiently and stores heated water for a long period. Suitable solution for hygienic domestic hot water production. Heat loss is very low due to high density HCFC-free polyurethane insulation.



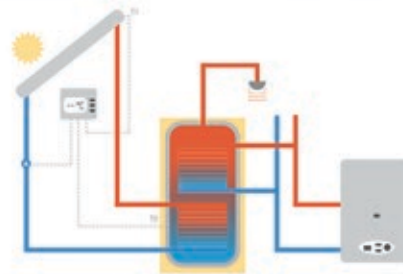
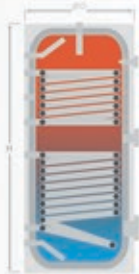
	BS 100	BS 160	BS 200	BS 300	BS 400	BS 500	BS 800	BS 1000	BS 1500	BS 2000	BS 2500	BS 3000
Diameter (mm)	488	590	590	700	750	750	900	1000	1118	1258	1458	1458
Height (mm)	1078	1124	1318	1208	1448	1800	2100	2070	2300	2228	2200	2558
Heat exchanger inlet-outlet	1"	1 1/4"	1 1/4"	1 1/4"	1 1/4"	1 1/4"	1 1/4"	1 1/4"	1 1/4"	1 1/4"	1 1/2"	1 1/2"
DHW inlet-outlet	3/4"	3/4"	3/4"	1"	1"	1"	1 1/4"	1 1/4"	1 1/4"	1 1/4"	1 1/2"	1 1/2"
Circulation	3/4"	3/4"	3/4"	1"	1"	1"	1 1/4"	1 1/4"	1 1/4"	1 1/4"	1 1/2"	1 1/2"
Electrical heater connection*	1 1/2"	1 1/2"	1 1/2"	1 1/2"	1 1/2"	1 1/2"	2"	2"	2"	2"	2"	2"
Empty weight (kg)	70	90	110	120	154	190	260	280	378	592	720	840
Insulation type/thickness	Hard Polyurethane - 50 mm						Soft PU - 80 mm					
Cover material	Electrostatic powder coated galvanized steel						Vinylex soft cover					
Tank inner coating	Enamel coating according to DIN 4753-3 standard											

* Electrical heater and accessories are optional

* Sizes and specifications are subject to change without prior notice

► BD Series Double Coil Domestic Hot Water Tanks

BD series tanks have the advantage of two coils allow hot water can be heated simultaneously. Bottom coil connects to solar collector(s) and upper coil connects to heating boiler. Hygienic solution thanks to enamel coating. Heat loss is very low due to high density HCFC-free polyurethane insulation.

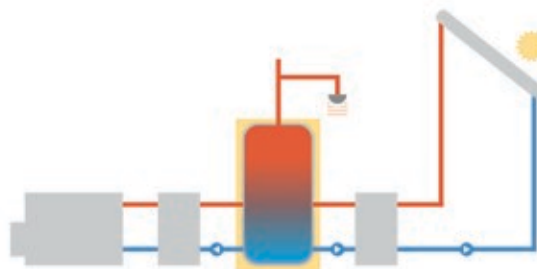


	BD 160	BD 200	BD 300	BD 400	BD 500	BD 800	BD 1000	BD 1500	BD 2000	BD 2500	BD 3000
Diameter (mm)	590	590	700	750	750	900	1000	1118	1258	1458	1458
Height (mm)	1124	1318	1208	1448	1800	2100	2070	2300	2228	2200	2558
Heat exchanger inlet-outlet	1 1/4"	1 1/4"	1 1/4"	1 1/4"	1 1/4"	1 1/4"	1 1/4"	1 1/4"	1 1/4"	1 1/2"	1 1/2"
DHW inlet-outlet	3/4"	3/4"	1"	1"	1"	1 1/4"	1 1/4"	1 1/4"	1 1/4"	1 1/2"	1 1/2"
Circulation	3/4"	3/4"	1"	1"	1"	1 1/4"	1 1/4"	1 1/4"	1 1/4"	1 1/2"	1 1/2"
Electrical heater connection*	1 1/2"	1 1/2"	1 1/2"	1 1/2"	1 1/2"	2"	2"	2"	2"	2"	2"
Empty weight (kg)	94	112	130	168	220	288	316	416	638	810	924
Insulation type/thickness	Hard Polyurethane - 50 mm						Soft PU - 80 mm				
Cover material	Electrostatic powder coated galvanized steel						Vinylex soft cover				
Tank inner coating	Enamel coating according to DIN 4753-3 standard										

*Electrical heater and accessories are optional

► BA Series Accumulation Tanks

Consistent solution for domestic hot water storage. Keeps the heated water at a constant temperature thanks to its high density HCFC-free polyurethane insulation which minimize heat loss. Can be used in constructions such as individual housings, apartments, hospitals, dormitories, schools and industrial facilities. Hygienic hot water storage solution with enamel coating.



	BA 100	BA 160	BA 200	BA 300	BA 400	BA 500	BA 800	BA 1000	BA 1500	BA 2000	BA 2500	BA 3000
Diameter (mm)	488	590	590	700	750	750	900	1000	1118	1258	1458	1458
Height (mm)	1078	1124	1318	1208	1448	1800	2100	2070	2300	2228	2200	2538
DHW inlets-outlets (4 pcs.)	1"	1 1/4"	1 1/4"	1 1/4"	1 1/4"	1 1/4"	1 1/2"	1 1/2"	1 1/2"	1 1/2"	2"	2"
Electrical heater connection*	1 1/2"	1 1/2"	1 1/2"	1 1/2"	1 1/2"	1 1/2"	2"	2"	2"	2"	2x2"	2x2"
Empty weight (kg)	54	70	78	95	129	152	222	234	329	468	558	618
Insulation type/thickness	Hard Polyurethane - 50 mm						Soft PU - 80 mm					
Cover material	Electrostatic powder coated galvanized steel						Vinylex soft cover					
Tank inner coating	Enamel coating according to DIN 4753-3 standard											

*Electrical heater and accessories are optional

* Sizes and specifications are subject to change without prior notice

ACCESSORIES

High quality equipments to ensure successful installation and optimum performance.

Solar controller



Solar controller for thermosiphon SWH



Solar station



Insulated inox pipe 25 mt.



Flat roof mounting sets



Tiled roof mounting sets



Safety valve 6 bar DHW



Safety valve 3 bar Solar



Flexible collector union 3/4"MM



Brass collector union 3/4"MM



Brass collector cap 3/4"MM



Brass one-way valve 1/2"FF



Roof hook



Pod kit for flat roof mounting set



Solar mixing valve



Automatic air vent



Strainer



Electrical heater for thermosiphon tanks



Thermostat with safety cut-off for thermosiphon tanks



Electrical heater & thermostat set for DHW tanks



Wrench for electrical heater installation



Magnesium anode bar



Concentrated glycol 3 It



Concentrated glycol 16 It



COMMERCIAL SYSTEMS

We offer commercial solar heating systems from consultancy level to complete service. We supply comprehensive services including consultancy, design, equipment supply, turn-key assembly and commissioning for hot water solutions of building facilities such as; hotels, hospitals, apartment buildings, dormitories, military facilities, public buildings, etc. High efficiency and long durability are main characteristics of our collective solar thermal solutions with over 20 years experience.



CONSULTANCY

DESIGN

MATERIAL SUPPORT

TURNKEY ASSEMBLY

COMISSIONING

BURAL
SOLAR